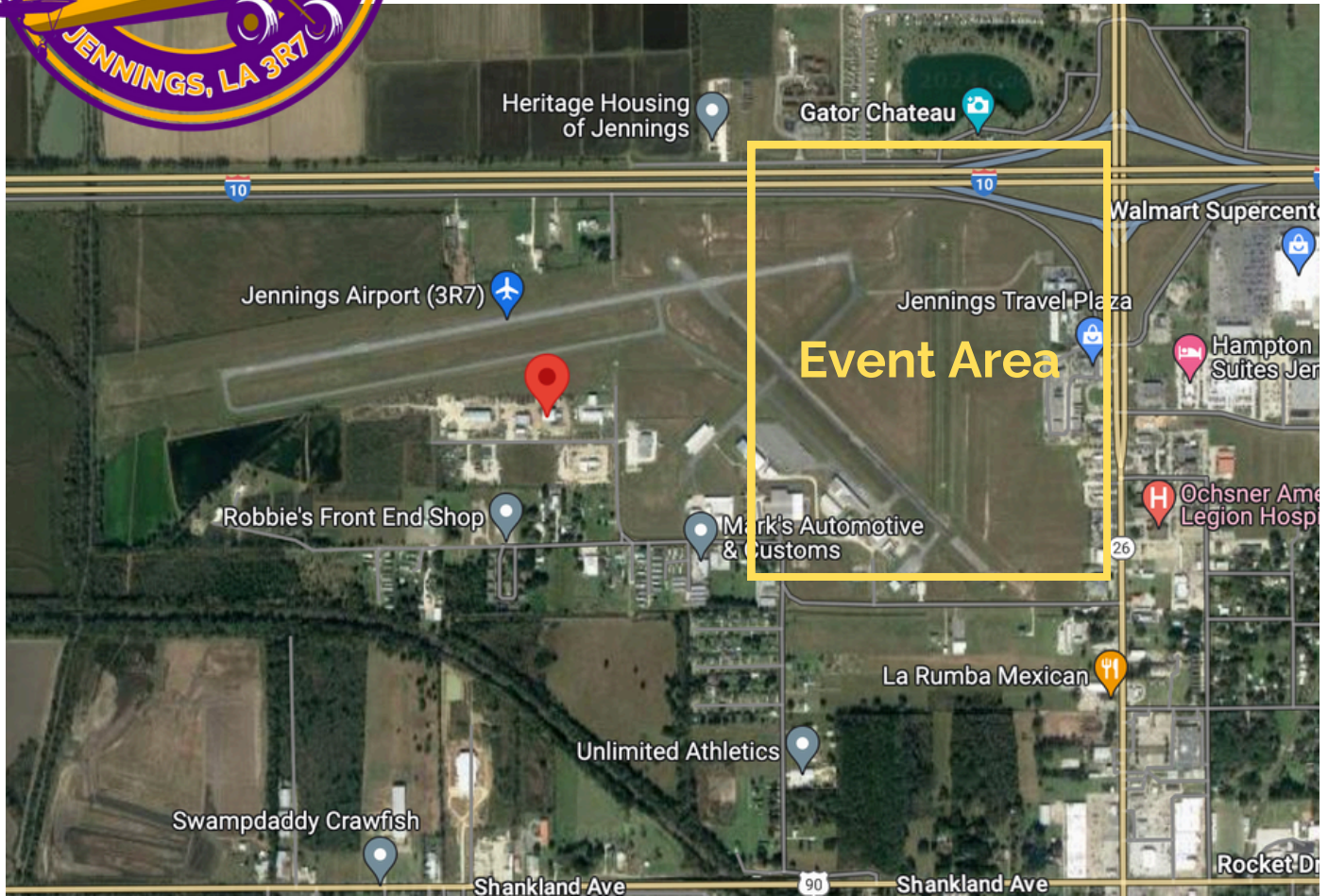




Swamp STOL Event Map



For General Parking:

From I-10, take Exit 64 for LA-26E/Elton Road. Continue down Elton Road for just over half a mile before turning right onto Airport Road. Watch for National STOL PARKING signs directing you into the grass lot.
(see route in **BLUE** on detail map).

For Camping:

From I-10, take Exit 64 for LA-26E/Elton Road. Continue down Elton Road for just over half a mile before turning right onto Airport Road. Continue PAST the grass lot on your right and watch for National STOL CAMPING signs directing you to a gate. You will be provided with a phone number to call to get an escort across the airport to the camping area.
(see route in **RED** on detail map).



Event Area Detail

⊗ = Anticipated Entry Gate

⊗ = Stage for Competitor/Volunteer Check In and Briefings



Note: If wet weather does not allow for use of the anticipated parking lot and entry gate, an email will be sent and alternative plans posted on the National STOL/Swamp STOL social media pages.