



Swamp STOL Event Map



For General Parking:

From I-10, take Exit 64 for LA-26E/Elton Road. Continue down Elton Road for just over half a mile before turning right onto Airport Road. Watch for National STOL PARKING signs directing you into the grass lot.

(see route in **BLUE** on detail map).

For Camping:

From I-10, take Exit 64 for LA-26E/Elton Road. Turn right at the stoplight for Holiday Drive, adjacent to the Jennings Travel Plaza. Stay to your right and continue past the Days Inn and Motel 6. Watch for the camping gate and entrance, which will be on your left hand side just before the road curves left.

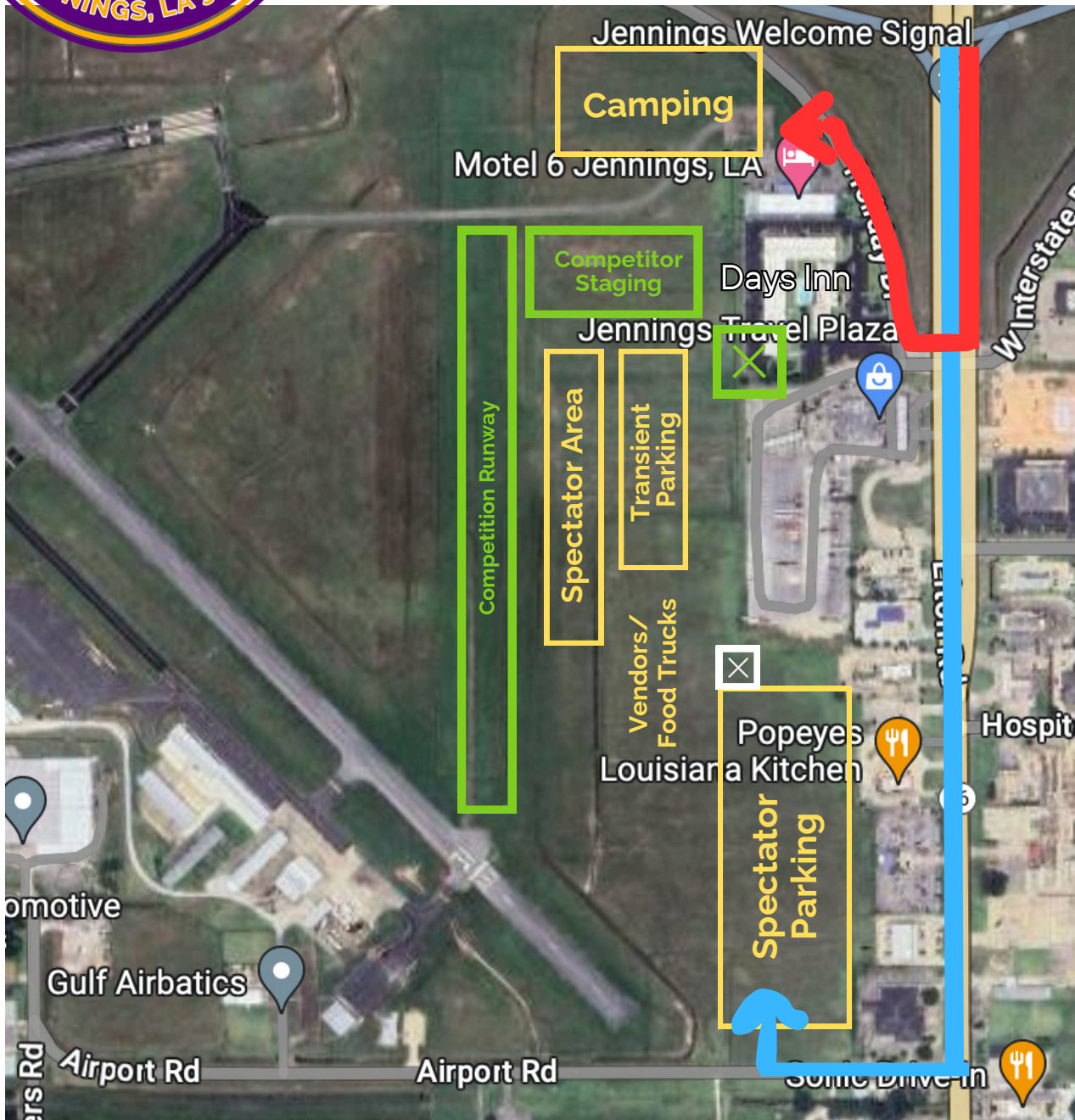
(see route in **RED** on detail map).



Event Area Detail

⊗ = Anticipated Entry Gate

⊗ = Stage for Competitor/Volunteer Check In and Briefings



Note: If wet weather does not allow for use of the anticipated parking lot and entry gate, an email will be sent and alternative plans posted on the National STOL/Swamp STOL social media pages.